



3.2 MM LUXURY FLOORING

DIAMOND TOUGH GLUEDOWN

Product Information

Construction - Solid Vinyl Tile (Luxury Vinyl Tile / LVT)

International Specifications - ASTM F1700, Class III, Type B embossed surface

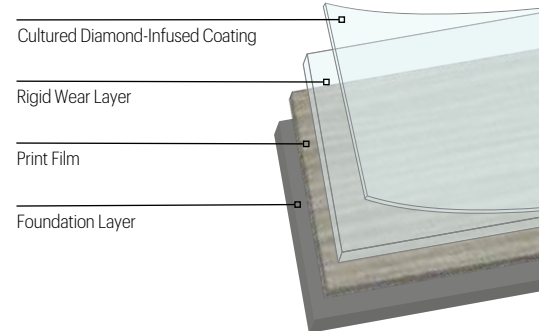
Overall Thickness - 3.2 mm (0.125 in.)

Wear Layer Thickness - 20 mil (0.5 mm)

Factory Finish - Cultured diamond infused coating

Installation - Glue Down

Maintenance Options - No Polish - No Buff, Polish Optional



Packaging

Size

12 in. x 24 in. (305 mm x 610 mm)
 18 in. x 18 in. (457 mm x 457 mm)
 6 in. x 48 in. (152 mm x 1219 mm)
 9 in. x 48 in. (229 mm x 1219 mm)

Pieces per Carton/Coverage

22 - 44 sq. ft. (4.09 m²)
 20 - 45 sq. ft. (4.18 m²)
 22 - 44 sq. ft. (4.09 m²)
 15 - 45 sq. ft. (4.18 m²)

Shipping Weight per Carton

54.53 lbs. (24.73 kg)
 55.80 lbs. (25.31 kg)
 54.50 lbs. (24.72 kg)
 55.77 lbs. (25.30 kg)

Testing

ASTM F1700			
Performance	Test Method	Requirement	Performance vs. Requirement
Thickness	ASTM F386	Nominal ±0.005 in.	Meets
Wear Layer Thickness	ASTM F410	0.020 in. (0.5 mm) minimum for Commercial Use	Meets
Size	ASTM F2421/F2055	± 0.016 in. per linear foot	Meets
Squareness	ASTM F2421/F2055	0.010 in. maximum	Meets
Residual Indentation	ASTM F1914	Average less than 8%	Meets
Chemical Resistance	ASTM F925	No more than slight change in surface dulling, attack or staining	Meets
Resistance to Heat	ASTM F1514	ΔE < 8	Meets
Resistance to Light	ASTM F1515	ΔE < 8	Meets
Additional Testing			
Static Load Resistance	ASTM F970*	< 0.005 in.	2000 psi
Dimensional Stability	Internal	≤ 0.018 in. per linear ft. MD ≤ 0.012 in. per lin. ft. AMD	Meets
Fire Test Data – Flame Spread	ASTM E648	0.45 W/cm ² or more Class 1	Meets
Fire Test Data – Smoke Evolution	ASTM E662	450 or less	Meets
Fire Test Data – Canada	CAN/ULC S-102.2	Use dependent	Flame Spread - 10 Smoke Developed - 125
ADA Standards for Accessible Design	Chapter 3, Section 302.1	Floor surfaces shall be stable, firm and slip resistant	Meets
Static Coefficient of Friction**	ASTM D2047/UL 410	≥ 0.5	Meets
Acoustics	ASTM E492 (IIC) ASTM E90 (STC) ASTM E2179 (DELTA IIC)	International Building Code (IIC ≥50) International Building Code (STC ≥50) Sound Transmission Reduction	6 in. concrete, no ceiling with S-1840 Quiet Comfort Luxury Flooring Underlayment IIC - 52 STC - 51 Delta IIC -22

3.2 MM LUXURY FLOORING

DIAMOND TOUGH GLUE DOWN

Sustainability

WELL v1 Feature

WELL v1 Feature	✓	Contribution	
Air	Feature 04 - VOC Reduction	✓	Tested and third party certified by FloorScore® as complying with CDPH v1.2
	Feature 11 - Fundamental Material Safety	✓	Product is free of asbestos and added lead (Part 1)
	Feature 25 - Toxic Material Reduction	✓	Free of flame retardants (Part 2) and phthalates (Part 3)
Mind	Feature 97 - Material Transparency	✓	Readily available Health Product Declaration® (HPD) to 1000 ppm
	Feature 88 (Part 2) Biophilia I - Qualitative	✓	Products available that incorporate nature patterns
	Feature 99 - Beauty and Design II	✓	Patterns and colors to aid in wayfinding and spatial familiarity (Part 3)

WELL v2 Feature

WELL v2 Feature	✓	Contribution	
Materials	Feature X01.1 Material Restrictions	✓	Product is free of asbestos
	Feature X05.1 Enhanced Material Restrictions	✓	Free of flame retardants (Part 2) and phthalates (Part 3)
	Feature X06.1 VOC Restrictions	✓	Adhesives associated with product are tested and third party certified by FloorScore as complying with CDPH v1.2
	Feature X06.2 VOC Restrictions	✓	Flooring is tested and third party certified by FloorScore as complying with CDPH v1.2
	Feature X07.1 Material Transparency	✓	Readily available Health Product Declaration (HPD) to 1000 ppm
Mind	Feature M02.1 Nature and Place	✓	Products available that incorporate nature patterns
Community	Feature C13 (Part 2) Accessibility and Universal Design	✓	Provided patterns and colors to aid in wayfinding and spatial familiarity

LEED™ v4.1

BPDO - EPD	Third Party certified Product Specific
BPDO - Material Ingredient	HPD
BPDO - Sourcing	29% pre-consumer recycled content
Location of Manufacturer	USA
Low Emitting Flooring	Tested and third party certified by FloorScore as complying with CDPH v1.2
Low Emitting Adhesives	Tested and compliant to CDPH v1.2; Methylene Chloride and Perchloroethylene not intentionally added; FloorScore Certified
SCAQMD #1168 Compliant.	S-319 Roll Strong – 0 g/L
Adhesives meet <50 g/L requirement	S-995 – 0 g/L S-1000 – 0.1 g/L

Carbon Footprint

Global Warming Potential, including Biogenic Carbon Raw Materials (A1) through Production (A3)	0.85 kg CO ² eq. / square foot (9.04 kg CO ² eq. / square meter)
---	---

Limited Warranty

20-year Commercial Warranty when installed in strict accordance with the detailed instructions.





DT330



DT330



DT332



DT333



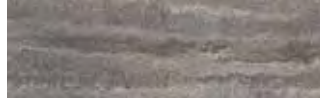
DT340



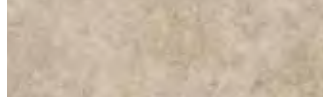
DT341



DT342



DT343



DT350



DT351



DT352



DT365



DT366



DT367



DT331



Building Better

We share your commitment to transparency and building a better environment together.

- Low VOC emissions and FloorScore® certified
- Free of ortho-phthalates and heavy metals
- Recyclable through the On&On® Recycling Program
- Health Product Declaration (HPD) and third-party certified Environmental Product Declaration (EPD) available
- Made in the USA with global and domestic content



DT141



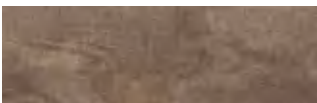
DT123



DT142



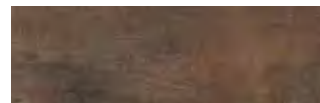
DT160



DT143



DT120



DT144



DT161



DT183



DT122



DT180



DT163



DT182



DT121